

Ceramic Batch Ball Mill Grinding Machine

Basic Information

- Place of Origin: China
- Brand Name: Ascend
- Certification: CE/ISSO9001
- Model Number: TCQ900x1100 TCQ1200X1500
- Minimum Order Quantity: 1 set
- Price: USD 3500-35000 Per set
- Packaging Details: Water and rust proof in wooden box or cotner
- Delivery Time: 10 working days
- Payment Terms: T/T, Western Union
- Supply Ability: 10 set per month



Product Specification

- Names: Batch Ball Mill
- Application: Mining, power Plant
- Product Name: Ball Mill Grinding Media Steel Ball
- Capacity: 0.2 To 10 Ton Per Time
- Grinding Media: Ceramic Balls
- Usage: For Ball Mill And Rod Mill, grinding Media
- Highlight: **Ceramic Ball Mill Grinding Machine, quartz batch ball mill, ceramic batch Ball Mill**



More Images

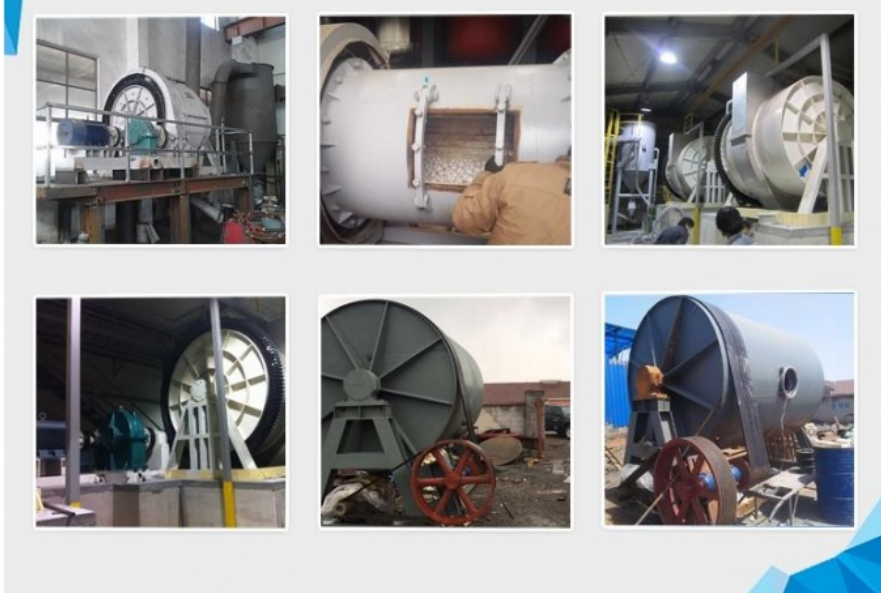


Product Description

0.5 ton to 5 ton per hour small ceramic batch ball mill grinding machine

Ceramic ball mill is a batch mill, it is used for fine grinding of feldspar, quartz, clay, ore and so on. The ceramic ball mill inner liner is composed of ceramic bricks, which is very hard and durable during grinding process. The grinding media is ceramic balls, it can prevent iron contamination and ensure the powder purity.

Ceramic ball mill is mainly used for material mixing, grinding, uniform product fineness, and saving power. It can be dry or wet. The machine can use different liner types according to production needs to meet different needs. The fineness of the grinding operation is controlled by the grinding time.



The biggest difference between ceramic ball mill and other ball mill is in the structure and lining. In the ore milling industry the ball mill used is a continuous feed type with a feed end and a discharge section, while the ceramic ball mill is a batch feed, and there is only one hole in the middle of the cylinder, which is both discharged and fed. After the grinding operation is completed once, the material is discharged, and the material to be ground next time is added to circulate. There is also a ceramic ball mill without a large ring gear, which is driven by a motor to drive the belt reducer to rotate the cylinder to complete the grinding operation. The ceramic ball mill liner is made of ceramic, silica and rubber to ensure the purity of the discharge.

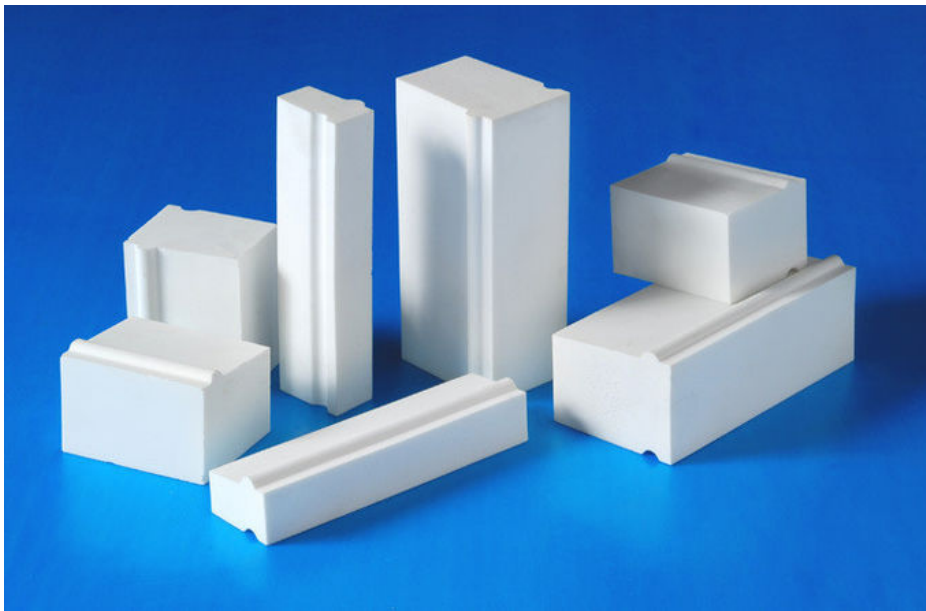




Specifications

Model	Capacity (t/h)	Cylinder speed (r/min)	Motor power (kw)	Weight (t)
TCQ910×1120	0.2	36	5.5-11	3.0
TCQ1200×1400	0.5	32	11-18.5	3.8
TCQ1500×1800	1.0	28	15-22	4.5
TCQ1800×2100	1.5	26	18.5-30	6.0
TCQ2100×2100	2.5	22	22-37	7.4
TCQ2500×2900	5.0	16	37-55	9.3
TCQ2800×3700	8.0	14.5	55-75	12.5
TCQ3000×3700	10	14	75-90	18.6

Ceramic batch ball mill liners and ceramic balls



Customer working site





ASCEND Henan Ascend Machinery Equipment Co., Ltd.

+86 18221130967

wilson_ascendme@163.com

mining-crushermachine.com

Shenglong block, high tech zone, Zhengzhou, China