



2KG gold silver platinum Electric melting Furnace oven

Our Product Introduction

for more products please visit us on mining-crushermachine.com

Basic Information

- Place of Origin: China
- Brand Name: Ascend
- Certification: CE/ISSO9001
- Model Number: GP-15 GP-25 ZP-15 ZP-25
- Minimum Order Quantity: 1 set
- Price: 1500 to 1800 USD
- Packaging Details: wooden box in container
- Delivery Time: 7-10 working days
- Payment Terms: T/T, Western Union
- Supply Ability: 100 set per month



Product Specification

- After-sales Service Provided: Online Support
- Certification: ISO9001
- Condition: New
- Voltage: 380v
- Power: 2.2kw, 7.5KW
- Use: Gold Mining Concentrate
- Warranty: 12 Months
- Application: Gold Ore Melting
- Product Name: Electric Gold Melting Furnace
- Highlight: **2KG Electric Smelting Furnace, 0.5kg centrifugal gold concentrator**



More Images



Product Description

Electric gold and silver casting melting furnace with capacity 1kg, smelting machine

Small gold melting furnace

Gold melting furnace is suitable for melting: platinum, palladium gold, gold, silver, copper, steel, gold powder, sand, silver powder, silver mud, tin slag, stainless steel, aluminum and other high melting point metals for melting.

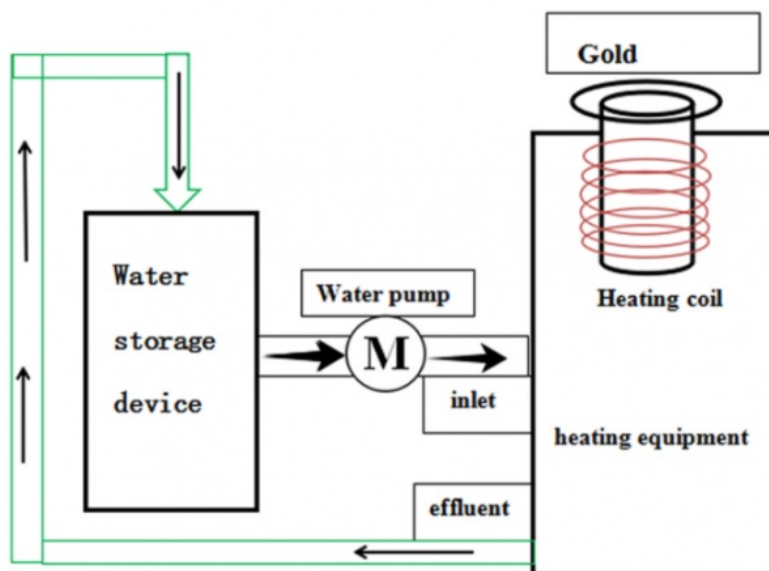
2. Single melting metal amount 1-2KG, single melting time 1-3 minutes.

3. The highest furnace temperature can reach 1500-2000 degrees.



Working principle

High-frequency and high-current flows into a heating coil (usually made of copper tube) that is wound into a ring or other shape, thereby generating a strong magnetic flux with a momentary change in the coil, and placing a heated object such as metal in the coil. The magnetic flux will penetrate the entire heated object. In the direction of the opposite direction of the heating current inside the heated object, a large eddy current will be generated. Due to the resistance of the heated object, a lot of heat will be generated. The temperature of the object itself rises rapidly, reaching the purpose of heating or smelting. To protect the machine body from being overheated, a water pump is needed to ensure the water recycling to cool the machine and prolong its working life.



Product advantages

1. Ultra-small size, covering less than 1 square meter;
2. 24-hour uninterrupted working ability;
3. Energy saving, low production cost;
4. Installation, operation is very convenient, just learn immediately;
5. Fast heating speed, reduce surface oxidation;
6. Environmental protection, no pollution, minimum loss of melting,

7. Greatly improve the working environment of the workshop.

8. Full protection: equipped with alarm devices such as over-pressure, over-current, heat input, water shortage, etc., and automatic control and protection.



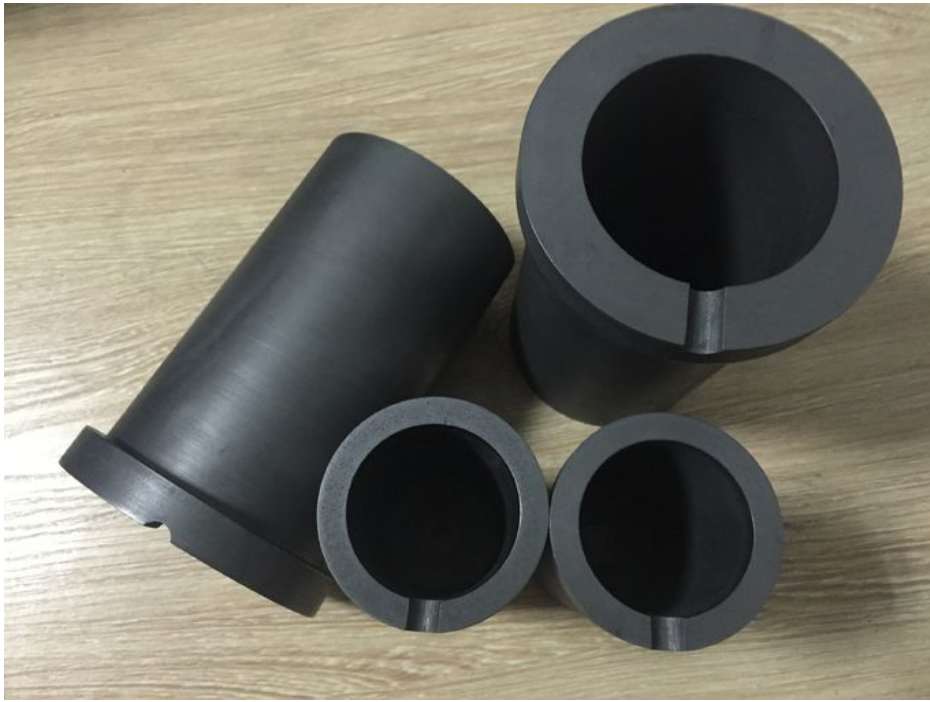


Specifications

Model	Power	Melting capacity for different materials		
		Iron, steel	Gold, silver, copper	Alluminium
GP-15	5KW	0.5KG	2 KG	0.5 KG
GP-25	8KW	1 KG	4 KG	1 KG
ZP-15	15KW	3KG	10KG	3KG
ZP-25	25KW	5KG	20KG	5KG
ZP-35	35KW	10KG	30KG	10KG
ZP-45	45KW	18KG	50KG	18KG
ZP-70	70KW	25KG	100KG	25KG
ZP-90	90KW	40KG	120KG	40KG
ZP-110	110KW	50KG	150KG	50KG
ZP-160	160KW	100KG	250KG	100KG

Spare parts crucibles





ASCEND Henan Ascend Machinery Equipment Co., Ltd.

+86 18221130967

wilson_ascendme@163.com

mining-crushermachine.com

Shenglong block, high tech zone, Zhengzhou, China