



Wet Pan Mill Gold Milling Machine Stone Rock Gold Ore Grinder Grinding 1500

Our Product Introduction

for more products please visit us on mining-crushermachine.com

Basic Information

- Place of Origin: China
- Brand Name: ASCEND
- Certification: CE
- Model Number: 1 Set
- Minimum Order Quantity: 1 SET
- Price: 4000-5000 USD Per Set
- Packaging Details: wooden box in container
- Delivery Time: 10 Days
- Payment Terms: L/C, T/T, Western Union, MoneyGram
- Supply Ability: 100 set per month

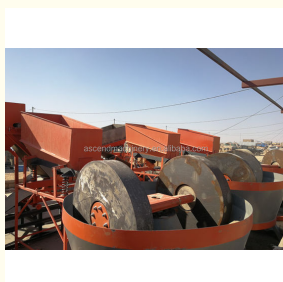


Product Specification

- Product Name: Wet Pan Mill
- Feeding Size: Different Needs
- Advantages: Long Time
- Application: Iron Ore
- Grinding Material: Metal Minerals, meal
- Keywords: Wet Pan Grinding Mill
- Motor Type: AC Motor
- Warranty: 1 Year
- Highlight: 1500 Gold Wet Pan Mill, 1500 Wet Pan Mill, Stone Rock Wet Pan Mill



More Images



Product Description

Gold grinding machine will cooperate with materials and water to join in mixed, when they mix, the process will have a functions of stirring and squeezing, cone wet grinding machine can remove the air between materials, even stir, moistening, can make material to be grind fineness. Gold grinding machine is the machine for grind gold, and less lost, high yield, convenient to move, less consumption energy, moderate price, easy operation, it is a machine for customers to beneficiation of gold, silver, lead, zinc, iron, molybdenum, copper, antimony, etc.

wet pan mill (104).jpg

.jpg
111.jpg

Working Principle

This wet pan mill mainly include power plant, frame, birdbath, grinding wheel, pan and other parts, using moving wheel grinding work way: first of all, the grinding pan mill motor will transmit power to the reducer, by the reducer, through a large vertical pass torque at the top of the horizontal axis and then it through a horizontal two axis pull rod to grinding wheel, the grinding wheel have driving force, along the horizontal axis do counterclockwise motion; Studio of the grinding wheel can be turning around wet mill big vertical shaft, and around the wheel of center shaft rotation, pan is stationary; Add ore materials, in the mill from the extrusion wheel of its own weight, grinding wheel with the pan during the revolution of great friction, by repeated after extrusion, kneading, grinding, were crushed.

1.png

Main Features of Wet Pan Mill

1. Less investment.
2. Easy to operation and maintenance.
3. High efficiency and saving power.
4. It can take the place of ball mill because all the materials that ball mill can handle, the wet mill machine can handle as well.
5. The Best price river gold widely used Sudan China wet pan mill for gold is the ideal equipment for small and medium enterprises that are in the field of ore dressing.
6. The wet mill machine made by ASCEND, can offer the seal cover to reduce the air pollution.

777.jpg

888.jpg

Spare parts

Technical parameters

Model	Type(mm)	Max feed size(mm)	Capacity(t/h)	Power(Kw)	Weight(ton)
1600	1600x350x200x460	<25	1-2	Y6L-30	13.5
1500	1500x300x150x420	<25	0.8-1.5	Y6L-22	11.3
1400	1400x260x150x350	<25	0.5-0.8	Y6L-18.5	8.5
1200	1200x180x120x250	<25	0.25-0.5	Y6L-7.5	5.5
1100	1100x160x120x250	<25	0.15-0.25	Y6L-5.5	4.5

1000	1000x180x12 0x250	<25	0.15-0.2	Y6L-5.5	4.3
------	----------------------	-----	----------	---------	-----

Packaging and shipping

444.jpg

666.jpg

You May Also Like

[ball mill \(22\)](#)

[QQ20230504180748.jpg](#)

[hammer crusher 24](#)

[Ball Mill](#)

[Jaw Crusher](#)

[Hammer Crusher](#)

-14

[spring cone crusher \(9\)](#)

14

[2-Roller Crusher](#)

[Cone Crusher](#)

[Impact Crusher](#)

Company information

Ascendmachinery expands its business in more than 160 countries and regions
Henan Ascend Machinery & Equipment Co., Ltd. was established in 2005 and it is located in the high-tech zone of Zhengzhou City, Henan Province. As a technology driven mining equipment company, it is committed to the R&D, production, sales and after-sales service of mining machinery and equipment.
The company's main products are crushers, grinding mill equipment, mineral beneficiation equipment, rotary dryer and crusher & grinding mill spare parts. In addition to the Chinese domestic market.

FAQ

Q1: Are you trading company or manufacturer?

A: We are factory.

Q2: How long is your delivery time?

A: Generally it is 7-10 days if the goods are in stock. or it is 15-30 days if the goods are not in stock, it is according to quantity.

Q3: What is your payment method?

A: 30% of total price should be paid by T/T as down payment; 70% balance payment should be paid by T/T before delivery.

Q4: What Information should customers give us, So that we can be able to provide you suitable quotation and service.

What minerals are you separating?

What's the maximum size of your raw minerals?

How much capacity do you need per hour for your project?

Q5: How long is the warrenty of your equipments? Does your company supply the spare parts?

A: The warranty period of crusher equipments is one year. and we will supply the spare parts for you at lowest cost.

Q6: If I need the complete crushing plant can you help us to build it?

A: Yes, we can help you combine a complete crushing line and give you related professional advices as long as you need. We had already build many mining projects in China & Overseas.

Q7:what's your motor brand?what bearing do you use?

For Motor-China top brand, also can use Siemens as per request .

For Bearing China top brand ZWZ, also can use SKF/NSK etc as per request

Contact us

Wilson Wechat WhatsApp

ASCEND Henan Ascend Machinery Equipment Co., Ltd.



+86 18221130967



wilson_ascendme@163.com



mining-crushermachine.com

Shenglong block, high tech zone, Zhengzhou, China