



## Large scale PE400x600 PE500x750 mobile jaw crusher capacity 50 80 100tph for gold mining stone crushing

Our Product Introduction

for more products please visit us on [mining-crushermachine.com](http://mining-crushermachine.com)

### Basic Information

- Place of Origin: China
- Brand Name: Ascend
- Certification: CE/ISO9001
- Model Number: PE200x300 PE220x350 PE250x400 PE400x600
- Minimum Order Quantity: 1 set
- Price: USD 18000-35000 Per set
- Packaging Details: Water and rust proof in wooden box or cotainer
- Delivery Time: 10 working days
- Payment Terms: T/T, Western Union, L/C
- Supply Ability: 10 set per month

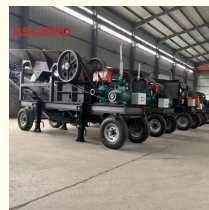


### Product Specification

- Name: Mobile Crushing Plant
- Type: Jaw Crusher, Impact Crusher, Hammer Crusher
- Motor Type: Diesel Engine Stone Crusher Plant
- Material: Casting Chrome Cr26NiMo Alloy
- Application: Mining, Quarry, Stone
- Warranty: One Year
- Condition: New
- Highlight: 100tph mobile jaw crusher, Gold mining mobile jaw crusher, Large scale mobile jaw crusher



### More Images



### Product Description

#### Mobile diesel engine stone jaw crusher crushing plant machine

The mobile jaw crusher is mainly composed of a jaw crusher, a feeder, a conveyor belt, a frame, and a traveling device. Among them, the jaw crusher, as the core component, adopts advanced crushing technology and can efficiently crush large pieces of materials into the required particle size.

One of its significant features is its outstanding mobility. Equipped with a powerful traveling device, it can freely move in either rough mountainous areas or narrow construction sites and quickly reach the operation site, greatly reducing the cost and time of material transportation.

Our Product Introduction



## Features and Advantages

- Easy mobility: Not restricted by sites and can be moved as per customers' needs.
- Power options: Powered by diesel engine or motor. Works with diesel engine if there's no electricity at the quarry.
- High crushing ratio: Enables rapid crushing of large stones into small pieces.
- Wide hopper mouth adjustment: Meets the demands of diverse users.
- High capacity: Handles 10 - 200 tons per hour.
- Simple structure and maintenance.
- Reliable operation with low costs.

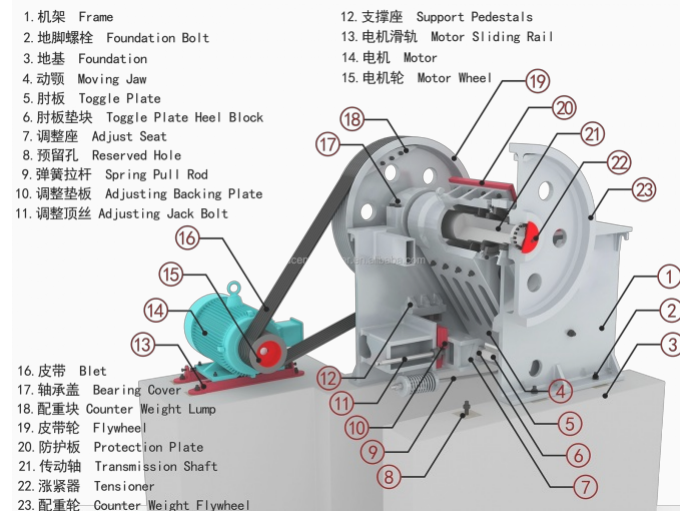
## Specification

Model	Feed opening size(mm)	Max feeding size(mm)	Discharge range(mm)	Capacity (t/h)	Power (kw)	Weight (t)
PE150x250	150x250	125	10-40	1-3	5.5	0.7
PE250x400	250x400	210	20-60	10-20	15	2.8
PE400x600	400x600	340	40-100	30-50	30	7
PE500x750	500x750	425	50-180	35-80	55	12
PE600x900	600x900	500	50-180	80-150	75	17
PE750x1060	750x1060	630	80-140	110-320	90	31
PE900x1200	900x1200	750	95-165	220-350	160	52
PE1200x1500	1200x1500	1020	150-350	400-800	220	100
PE150x750	150x750	120	18-48	10-25	15	3.8
PE250x750	250x750	210	15-60	15-35	30	6.5
PE250x1000	250x1000	210	15-60	16-52	37	7
PE250x1200	250x1200	210	15-60	20-60	45	9.7

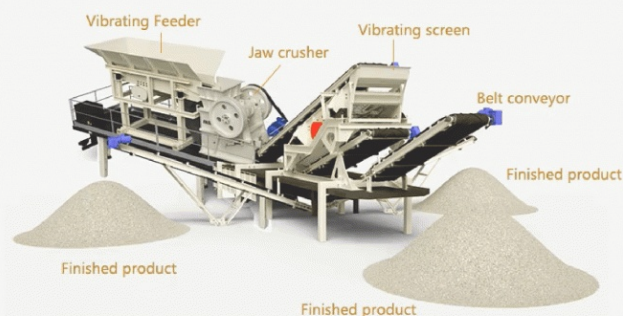
## working principle

Based on diverse crushing process requirements, it can be structured in the process of "crushing first and screening later" or "screening first and crushing later". It can also be combined into three types of crushing and screening systems for coarse,

medium, and fine crushing as per the actual needs.



## DIAGRAM OF MOBILE STATION



## ASCEND





## Package and delivery



## working sites



## Company Profile

Henan Ascend Machinery & Equipment Co.,Ltd. was established in 2005 .As a joint-venture company, it is committed to the R&D, production, sales and after-sales service of mining machinery and equipment. The company's main products are crushers, milling equipment, mineral processing equipment, rotary dryer and crusher & grinding mill spare parts. In addition to the Chinese domestic market, Ascend machinery expands its business in more than 60 Countries and regions and has won wide-spread praise and trust of international customers.



## ASCEND Henan Ascend Machinery Equipment Co., Ltd.

+86 18221130967
 wilson\_ascendme@163.com
 mining-crushermachine.com

Shenglong block, high tech zone, Zhengzhou, China