



Primary Jaw Crusher PE500x750 PE600x900 80 100tph Capacity For Gypsum Quartz Limestone In Kenya Congo

Our Product Introduction

for more products please visit us on mining-crushermachine.com

Basic Information

- Place of Origin: HENAN, CHINA
- Brand Name: ASCEND
- Certification: ISO9001
- Model Number: PE150x250, PE200x300, PE250x350, PE250x400, PE300x400
- Minimum Order Quantity: 1 set
- Price: US \$ 4600 - 5800 set/sets
- Packaging Details: Water and rust proof in wooden box or cotainer
- Delivery Time: 7-10 days
- Payment Terms: T/T
- Supply Ability: 30 set per month



Product Specification

- Other Name: Ore Stone Crusher Machine
- Capacity: 10-200tph
- Marketing Type: Hot Product 2024
- Core Selling Point: High Productivity
- After Sale Service: 7*24hours
- Online Service Time: 7*24hours
- Highlight: PE600x900 jaw crusher, PE500x750 jaw crusher, 100tph jaw crusher



More Images



ASCEND Jaw Crusher for Limestone Pebble Granite breaking to small Aggregates

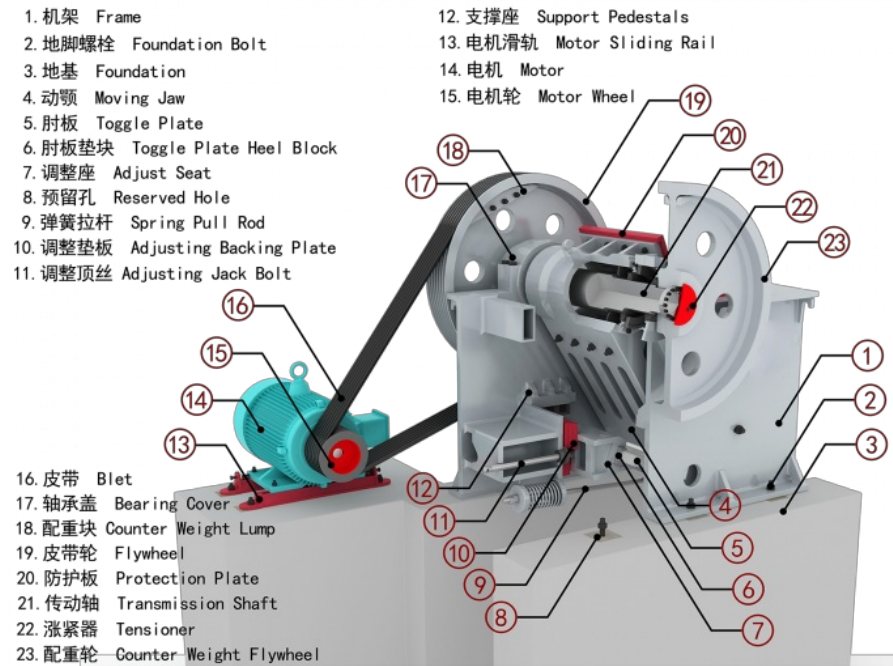
Jaw crusher has the characteristics of large crushing ratio, uniform product particle size, simple structure, reliable operation, easy maintenance, economical operation cost, etc. It is widely used in many industries such as mining, building materials, highway, railway and chemical industry. It can crush various materials with compressive strength not exceeding 320 MPa and is the preferred equipment for primary crushing.





Working principle

The motor is driven by a belt and the eccentric shaft cyclically moves the movable jaw towards the fixed jaw. As the movable jaw moves, the angle between the toggle plate and the movable jaw plate increases. Therefore, the movable jaw moves toward the fixed jaw. This process crushes the material. When the movable jaw is lowered, the angle between the toggle plate and the movable jaw decreases, and the movable jaw pulls the rod and spring away from the fixed jaw, and finally the crushed material is discharged from the outlet.



Specification

Model	Feed opening size(mm)	Max feeding size(mm)	Discharge range(mm)	Capacity(t/h)	Power (kw)	Weight (t)
PE150x250	150x250	125	10-40	1-3	5.5	0.7
PE200x300	200x300	165	10-45	5-10	5.5	1.2
PE250x400	250x400	210	20-60	5-20	15	2.8
PE300x500	300x500	240	20-65	8-30	22	3.5
PE400x600	400x600	340	40-100	30-50	30	7
PE500x750	500x750	425	50-180	35-80	55	12
PE600x900	600x900	500	50-180	80-150	75	17
PE750x1060	750x1060	630	80-140	110-320	90	31
PE900x1200	900x1200	750	95-165	220-350	160	52
PE1200x1500	1200x1500	1020	150-350	400-800	220	100
PE150x750	150x750	120	18-48	10-25	15	3.8
PE250x750	250x750	210	15-60	15-35	30	6.5
PE250x1000	250x1000	210	15-60	16-52	37	7
PE250x1200	250x1200	210	15-60	20-60	45	9.7

Advantage:

High capacity: It can efficiently break materials of various hardness into the required specifications, improving production efficiency. And depend on different models, the capacity can reach 50 tons per hour, or 100 tons per hour, and the maximum can reach 1000 tons per hour.

Durable and reliable: Most of the jaw plates are made of high manganese steel, and the commonly used one is ZGMn13, which ensures durability and reliability, reduces the failure rate and reduces maintenance costs.

Wide application: It can be used to crush various ores and rock materials with a compressive strength of up to 350 MPa, such as limestone, granite, basalt and so on. It is widely used in ores, building materials, roads, chemical industry and many other industries.

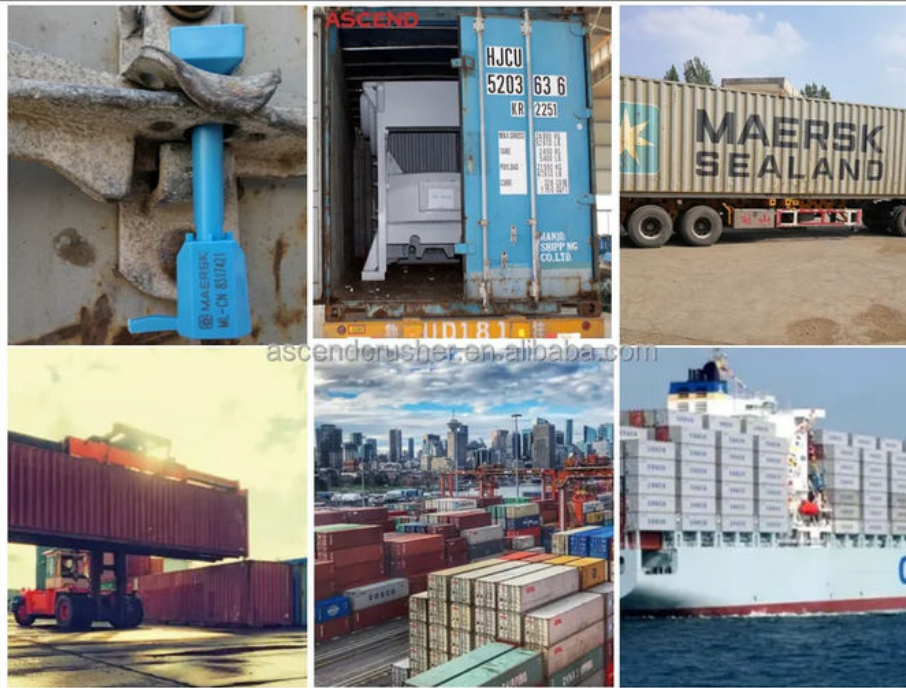
Final products Aggregates after Jaw Crusher crushing



Main parts & spare parts



Packing & Shipping



contact us

Contact: Wilson
Mobile: +86-18221130967
Email: wilson_ascendme@163.com



Wechat





WhatsApp



ASCEND Henan Ascend Machinery Equipment Co., Ltd.

 +86 18221130967

 wilson_ascendme@163.com

 mining-crushermachine.com

Shenglong block, high tech zone, Zhengzhou, China