



400 500 Kg Per Hour Capacity Basalt Marble Ceramic Crushing Output Size Less Than 3mm Lab Sample Double Roller Crusher

Our Product Introduction

for more products please visit us on mining-crushermachine.com

Basic Information

- Place of Origin: CHINA
- Brand Name: ASCEND
- Certification: ISO9001
- Model Number: 200x75, 200x125, 200x150
- Minimum Order Quantity: 1 set
- Price: USD 650 - 750 set
- Packaging Details: Water and rust proof in wooden box or container
- Delivery Time: 7-10 work days
- Payment Terms: T/T, Western Union
- Supply Ability: 30 set per month



Product Specification

- Product Name: Lab Double Roller Crusher
- Keyword: Double Roller Crusher
- The Machines Classification: Crushing Equipment
- Advantage: High Efficiency
- Warranty Period: 1 Year
- Highlight: 3mm lab sample double roller crusher, Marble Ceramic Crushing Double Roller Crusher



More Images



Product Description

China Ascend Lab Roller Crusher For Limestone Marble Grinding Powder For Mining Testing

Product Description

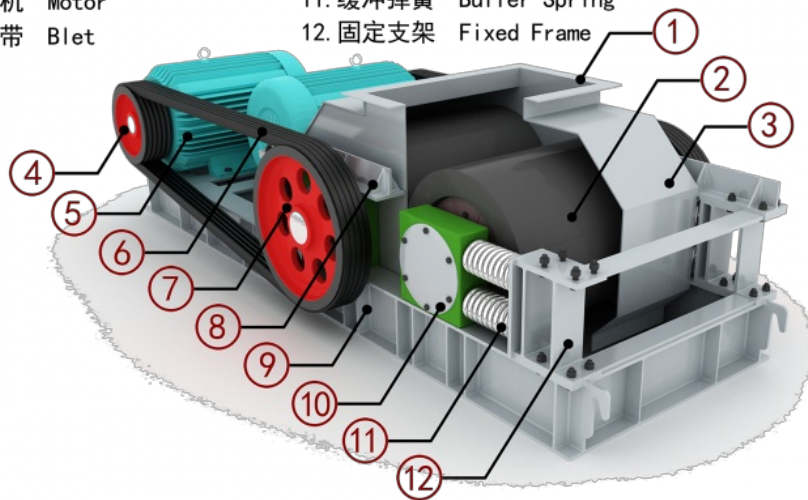
China Ascend laboratory double roll crusher is widely used in crushing mining materials such as limestone, granite, marble and gold ore. It can crush and pulverize small amounts of materials for experimental analysis and testing. Our laboratory double roll crusher has many advantages such as high efficiency, easy operation and low noise.



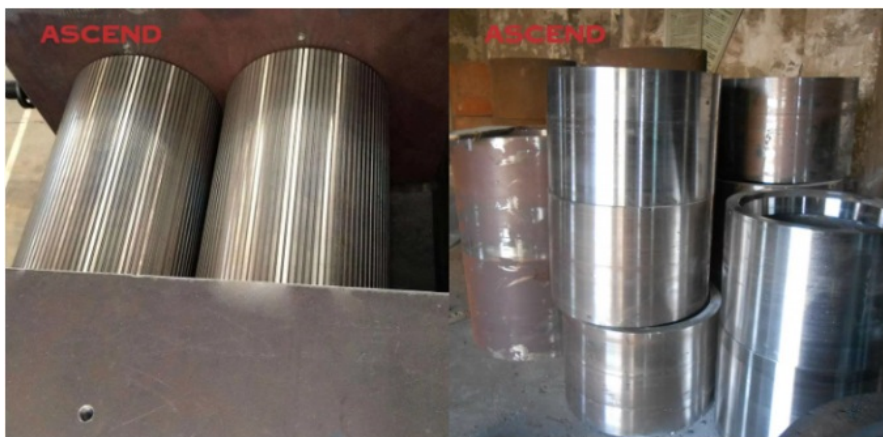
Working Principle

There are two cylindrical rollers horizontally installing on mutually parallel racks, where one of the roller bearing is movable and the other roller bearing is fixed. Driven by electric motor, the two rollers do opposite rotation, which produces downward acting force to crush materials between two crushing rollers; broken materials that are in line with the required size are pushed out by roller and discharged from the discharging port.

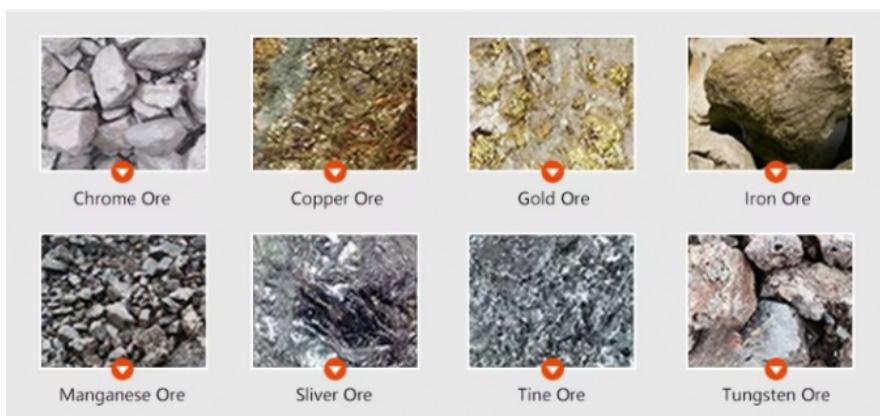
- | | |
|-------------------------|------------------------|
| 1. 进料口 Feed Inlet Mouth | 7. 皮带轮 Belt Pulley |
| 2. 辊皮 Roller Surface | 8. 水平支架 Base Frame |
| 3. 机壳 Shell | 9. 底座支架 Main Frame |
| 4. 电机轮 Motor Wheel | 10. 活动轴承座 Bearing Seat |
| 5. 电机 Motor | 11. 缓冲弹簧 Buffer Spring |
| 6. 皮带 Blet | 12. 固定支架 Fixed Frame |



Spare Parts



Raw Materials



Specification

Model	Φ200x75	Φ200x125	Φ200x150
Feeding port/mm	75x13	125x13	150x13
Max.Feeding size/mm	≤13	≤13	≤13
Discharge size/mm	0.1-3	0.1-3	0.1-3
Spindle speed/(r/min)	380	380	380
Capacity/(kg/h)	300	450	600
Motor/kw	1.5	3	3
Net weight/kg	165	235	240
Gross weight/kg	190	260	265
Dimensions/mm	1170x580x700		

Packaging & Shipping



Contact Us

Contact: Wilson
Mobile: +86-18221130967
Email: wilson_ascendme@163.com



Wechat



WhatsApp



ASCEND Henan Ascend Machinery Equipment Co., Ltd.



+86 18221130967



wilson_ascendme@163.com



mining-crushermachine.com

Shenglong block, high tech zone, Zhengzhou, China

