



Factory In Stock Knelson STL-60 Capacity 15-30TPH Gravity Separator Machine Centrifugal Concentrator For Gold Extraction

Our Product Introduction

for more products please visit us on mining-crushermachine.com

Basic Information

- Place of Origin: China
- Brand Name: Ascend
- Certification: ISO9001
- Model Number: STL-30 STL-40 STL-60 STL-80 STL-100
- Minimum Order Quantity: 1 Set
- Price: 1200-1800USD
- Packaging Details: regular package
- Delivery Time: 7-10 work days
- Payment Terms: L/C, T/T, Western Union
- Supply Ability: 100 sets per month



Product Specification

- Fine Gold Recovery: Gold Concentrator
- Usage: Gold Prospecting, Panning, Mining
- Warranty: 1 Year
- Type: Gold Processing Plant
- Installation: Engineer Guide
- Material: Stainless Steel
- Recovery Rate: More Than 90%
- After-Sales Service: Online Support
- Highlight: **Centrifugal Concentrator Gravity Separator Machine**
, Knelson STL-60 gravity separator machine,
Gold Extraction Gravity Separator Machine



More Images



Product Description

Factory in Stock Knelson capacity 15-30TPH gravity separator machine centrifugal concentrator

Knelson Gold separator is a centrifugal concentrator. It can be used not only for placer gold mining, but also for hard rock mining to recover natural gold and replace amalgam. It is also used to recover gold from old tailings. Applications show that the recovery rate can be as high as 90%, especially in the case of recovering natural gold in the vein, 65% of the ore grinding size is 0.074mm, the recovery rate of natural gold is expected to be as high as 98%, and for natural gold with a particle size of 0.004mm, the recovery rate is 97%.

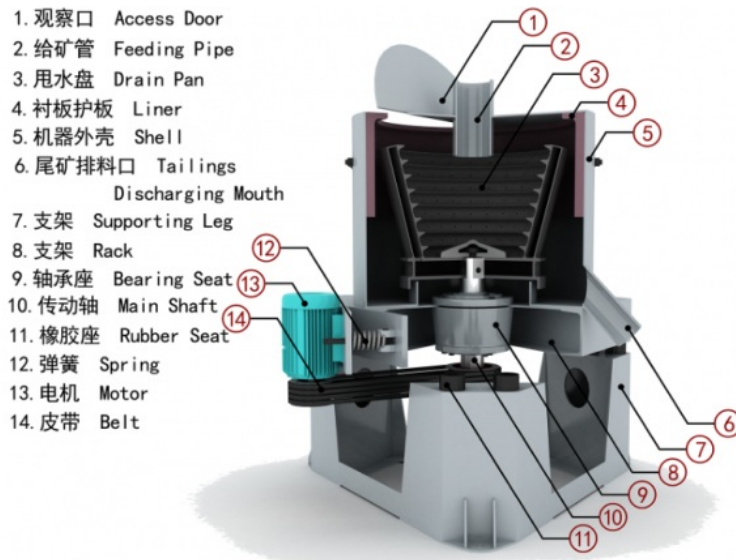




Working principle of centrifugal concentrator:

The main shaft is a hollow shaft, and the pressurized backwash water enters from the main shaft and then enters the separation device, and the water is sprayed from the hole onto the grid. During the process, the water pressure is 0.06-0.15MPa.

The slurry mixed with water, ore and sand is injected into the main machine. Under the strong centrifugal force, the slurry moves upward along the cone, and the light particles are extracted from the upper part of the cone and then discharged through the tailings outlet. Heavy particles will stay in the inner layer of the screen.



Features of Knelson gold mine centrifugal concentrator

1. High concentration rate and high recovery rate;
2. Full process automation, stable recovery performance;
4. Environmental protection (no chemical additives or reagents);
5. Low water and electricity demand;
6. Low production cost, durable wear parts, and extremely low maintenance requirements;
7. Compact design takes up little space and is easy to incorporate into existing mining processes;
8. Quick return on investment, usually less than half a year.

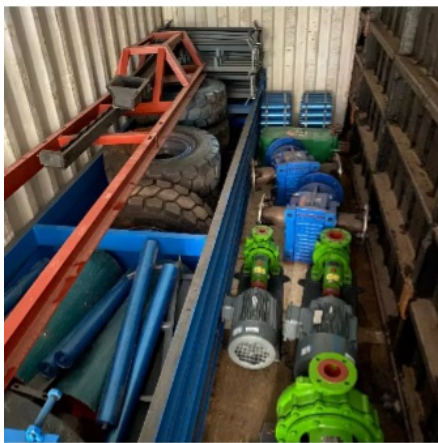
Model	STL-30	STL-40	STL-60	STLB80	STLB100	STLB120
Feeding Capacity (T/h)	0-0.25	2-3	8-12	10-20	50-100	100-200

Fluidization Water Required (L/M)	13-20	50-80	130-180	450-900	2100-4200	4150-8300
Slurry Water Required (L/M)	16	120	400	600	900	1400
Feeding Density (%)	0-50	0-50	0-50	0-50	0-50	0-50
Feeding Size (mm)	0-2.5	0-4	0-6	0-6	0-6	0-6
Concentration Cleaning Up Cycle	1-4 hours					
Concentrate Weight (Kg)	2-4	5-10	15-20	35-40	50-70	80-100
Power Requirements (Kw)	1.1	2.2	7.5	15	18	22
Approximate Shipping Weight (Kg)	160	385	1000	1500	2800	4200
Approximate Crated Shipping Dimensions (mm)	800×560×710	1280×1030×1135	1850×1550×1600	2300×1800×2200	2400×2400×2250	2600×2600×2351





Package&delivery



Working sites





customer service



company profile

Henan Ascend Machinery

Henan Ascend Machinery & Equipment Co., Ltd. was established in 2005 and it is located in the high-tech zone of Zhengzhou City, Henan Province. As a technology driven mining equipment company, it is committed to the R&D, production, sales and after-sales service of mining machinery and equipment. The company's main products are crushers, grinding mill equipment, mineral beneficiation equipment, rotary dryer and crusher & grinding mill spare parts. In addition to the Chinese domestic market, Ascend machinery expands its business in more than 160 countries and regions.



ASCEND Henan Ascend Machinery Equipment Co., Ltd.



+86 18221130967



wilson_ascendme@163.com



mining-crushermachine.com

Shenglong block, high tech zone, Zhengzhou, China