



1200 Model Three Rollers Water Wet Pan Mill With 1 Tph Capacity For Gold Ore Grinding Discharging Size Within 200 Meshes

Our Product Introduction

for more products please visit us on mining-crushermachine.com

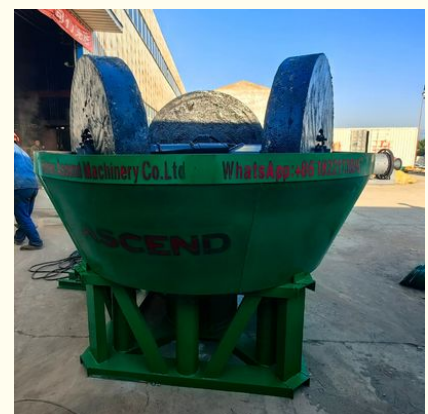
Basic Information

- Place of Origin: CHINA
- Brand Name: Ascend
- Certification: ISO9001
- Model Number: 1600 1500 1400 1200 1100 1000
- Minimum Order Quantity: 1 set
- Price: USD 3599-4699 set
- Packaging Details: Water and rust proof in wooden box or cotainer
- Delivery Time: 7-10 working days
- Payment Terms: T/T, Western Union
- Supply Ability: 20 set per month

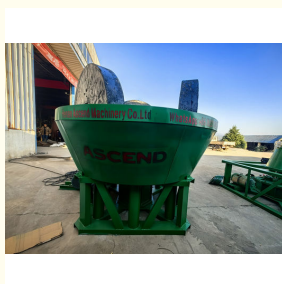


Product Specification

- Product Name: Wet Pan Mill
- Application: Gold Silver Ore
- Advantages: Easy To Operate
- Color: According To Customer's Requirement
- Highlight: 200 meshes water wet pan mill, 3 Rollers Water Wet Pan Mill



More Images



Product Description

China Ascend gold grinding mill wet pan mill for gold mining

Wet pan mill is also called gold grinding mill machine. It is used for grinding gold ore, especially small rock stone with gold, which can grind into 100-150 mesh. Many customers from Africa would like to import wet pan mill because of low cost and high productivity. The most common way is to put mercury in the wet pan mill, and mix the gold particle with the mercury, which is called Amalgamation. Then the mixture of gold and mercury can be put into crucible for high temperature heating. During this process, the mercury is evaporated and pure gold is left in the crucible. The most important thing is that our customers can get pure gold directly after wet pan mill, which is suitable for people who want to begin small business.

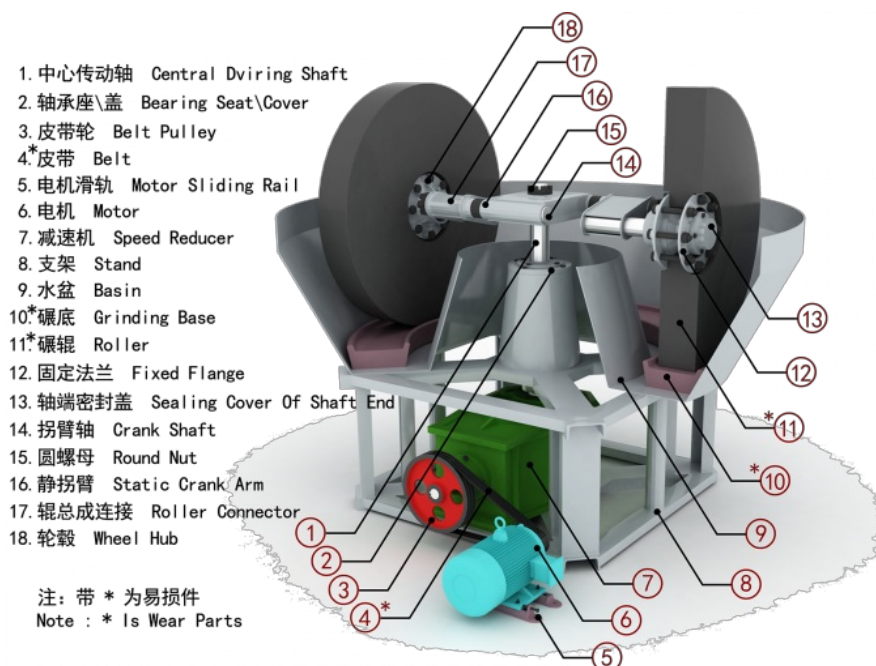
Product picture





Working principle

The motor drives the speed reducer, the speed reducer drives the roller on the main shaft to operate. We add materials and liquid in a certain proportion for grinding. After grinding, the monomer dissociated mineral fine particles are brought to the liquid surface in the mixed slurry, and are discharged through the overflow discharge port arranged on the basin, and enter the next operation process for processing. The coarse-grained minerals settle at the bottom of the grinding base and continue to be ground until the fineness reaches the standard. There is a screen set at the discharge mouth of the basin, (the screen mesh size should be reasonably set according to the mineral type and sorting requirements) it can strictly control the classification particle size to avoid over-crushing of minerals or uneven particle size, creating good conditions for subsequent operations.



Main Features of Wet Pan Mill

1. Less investment.
2. Easy to operation and maintenance.
3. High efficiency and saving power.
4. It can take the place of ball mill because all the materials that ball mill can handle, the wet mill machine can handle as well.
5. The Best price river gold widely used Sudan wet pan mill for gold is the ideal equipment for small and medium enterprises that are in the field of ore dressing.
6. The wet pan mill machine made by ASCEND, can offer the seal cover to reduce the air pollution.

Specification

Model	Type (mm)	Max feed size (mm)	Capacity(t/h)	Power(kw)	Weight(ton)
1600	1600x350x200x460	25	1-2	Y6L-30	13.5
1500	1500x300x150x420	25	0.8-1.5	Y6L-22	11.3
1400	1400x260x150x350	25	0.5-0.8	Y6L-18.5	8.5
1200	1200x180x120x250	25	0.25-0.5	Y6L-7.5	5.5
1100	1100x160x120x250	25	0.15-0.25	Y6L-5.5	4.5
1000	1000x180x120x250	25	0.15-0.2	Y6L-5.5	4.3

Wet pan mill operating rules

1. The operator must be trained by the manufacturer and fully understand the structure and performance of the machine before they can operate. The operator must comply with the relevant safety and shift transfer system.
2. Before work, strictly follow the lubricating oil regulations to refuel, and keep the oil amount appropriate, the oil circuit smooth, and the oil injection port clean.
3. Check whether the circuit, electrical parts, line connectors, switches are solid and complete. If there is damage, it must be repaired and replaced.
4. Check whether the parts of the machine are intact, whether the roller rotates flexibly, the tightness of the transmission belt, and whether the transmission parts are securely connected; After the inspection is completed, the boot idling for 3-5 minutes, confirm that the parts are normal, before adding the ore, and must be added in strict accordance with the prescribed amount of ore, it is strictly prohibited to overload work.
5. When feeding the ore, the material must be sifted to prevent hard metal debris such as iron blocks from being put into the mill and damaging the machine.
6. When stopping for some reason, the material in the roller should be removed first, and then started. It is strictly prohibited to forcibly start with heavy load.
7. When the machine is in operation, the operator shall not leave, and should often inspect the working conditions of various parts. In case of abnormal sound of the equipment, large vibration of the roller, excessive temperature of the reducer oil, overheating of the motor housing, and slip of the transmission belt, the machine should be shut down immediately.

8. During the shutdown process, when the roller is not completely stopped, it is not allowed to extend the arm and other instruments into the roller basin to prevent injury and damage to the machine.

Spare Parts



Working site



ASCEND engineer assist installation in Sudan



We also supply

Crushing Equipment



Jaw Crusher



Cone Crusher



Impact Crusher



2-Roller Crusher



Compound Crusher



Hammer Crusher

Grinding Equipment



Wet Pan Mill



Ball Mill



Raymond Mill

Beneficiation Equipment



Flotation Machine



6-S Shaking Table



Jigging Machine

Feeder & Conveyor



GZD Vibrating Feeder



Belt Conveyor



Screw Conveyor



Bucket Elevator

Contact us

Contact: Wilson
Mobile: +86-18221130967
Email: wilson_ascendme@163.com



Wechat



WhatsApp



ASCEND Henan Ascend Machinery Equipment Co., Ltd.

+86 18221130967

wilson_ascendme@163.com

mining-crushermachine.com

Shenglong block, high tech zone, Zhengzhou, China